

Specification:

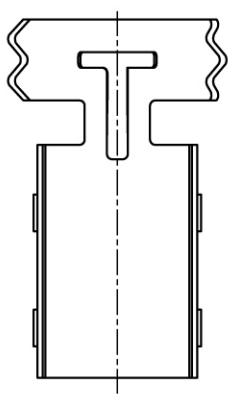
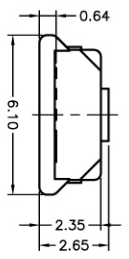
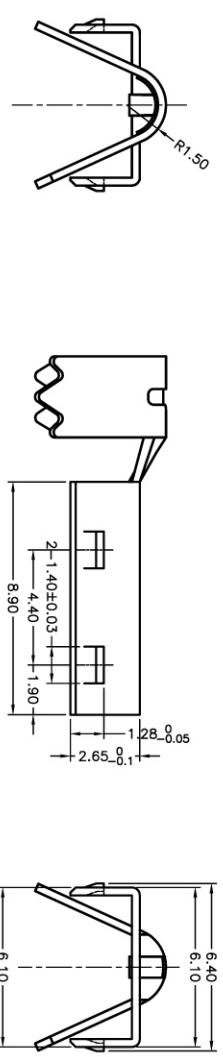
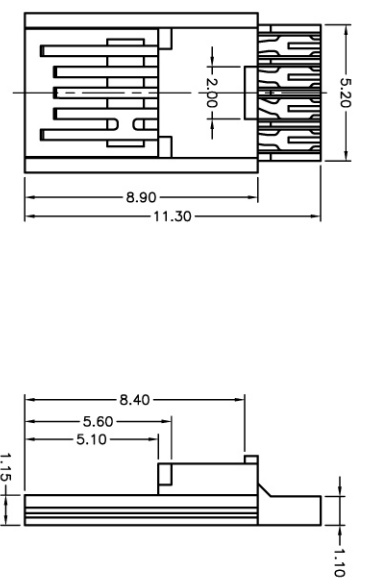
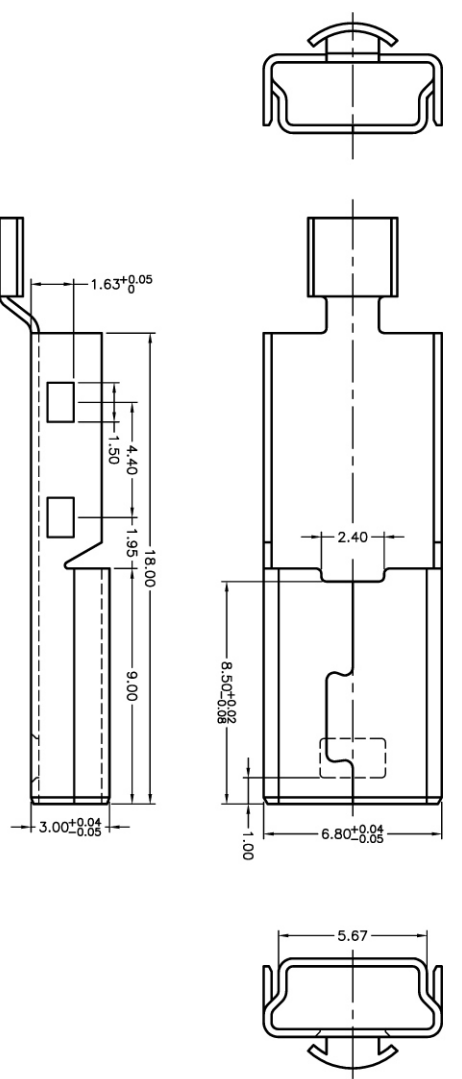
1. Electrical Characteristics:  
 Voltage Current rating: 1AMP, 30VAC  
 Insulation Resistance: 100MΩ min  
 Contact Resistance: 50mΩ max
2. Environmental  
 Operating Temperature: -50°C to 85°C
3. Material  
 Housing: LCP, Color: Black  
 Terminal: Phosphor bronze, T=0.25mm  
 Shell: Brass, T=0.40mm

PCB LAYOUT

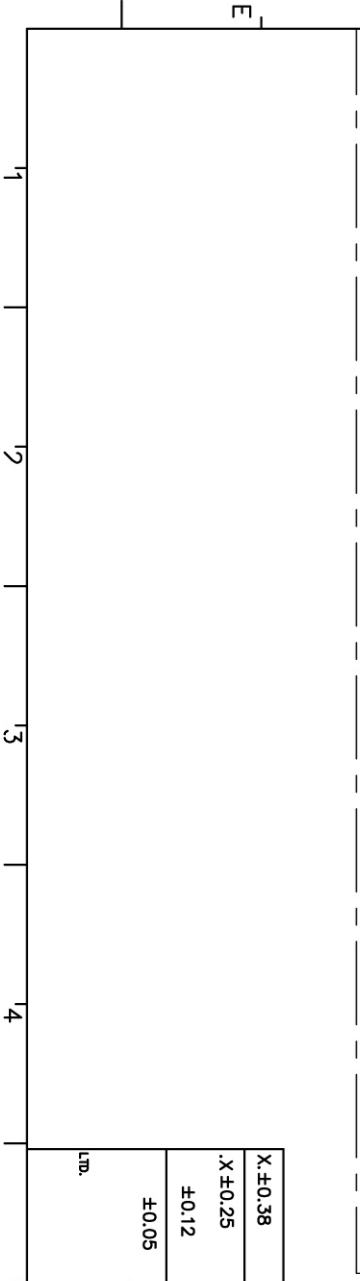
X: ±0.38	X: ±4°	UNITS	mm
.X ±0.25	.X ±2°	MATL	
±0.12	.XX°	SEE NOTE	
±0.05	.XXX°	FINISH	
		SEE NOTE	
		Q'TY	
		CHKD:	
		DR: <i>Gaochen</i>	2005/08/04
<b>TC-TEK</b> Connection Solutions - <b>台灣訊科實業有限公司</b> <b>TC-TEK Industries Limited</b> TEL: 886-2-889914199 FAX: 886-2-29929564		TITLE: Mini-usb SS B TYPE SMT(雙卡點) PART NO.: P01BT1-05FLBXXXXX2X0	
APPD: <i>Gaochen</i> 2005/08/04		DWG NO.: P01BT1-05F	
SCALE	SHEET	REV.	CUSTOMER DRAWING
1:1	1/1	XA	

REV.	ECN. NO.	APPD.

REV.	ECH. NO.	APPD.



Specification:  
 1. Electrical Characteristics:  
 Voltage Current rating:1AMP.30VAC  
 Insulation Resistance:100MΩ min  
 Contact Resistance:50mΩ max  
 2. Environmental  
 Operating Temperature:-50°C to 85°C  
 3. Material  
 Housing: LCP; Color: Black  
 Terminal: Brass, T=0.25mm  
 Shell: Spcc, T=0.30mm



X: ±0.38	X': ±4'	UNITS	mm
X: ±0.25	X': ±2'	MAT'L	SEE NOTE
±0.12	.XX'	FINISH	SEE NOTE
±0.05	.XXX'	Q'TY	SEE NOTE
LTD.		APPD:	Rockwell 2005/08/04
		DR:	Rockwell 2005/08/04
		CHKD:	
		SCALE	1:1
		SHEET	1/1
		REV.	XA
		CUSTOMER DRAWING	
		PART NO.:	P01BS1-05MLBXXXX1X0
		DWG NO.:	P01BS1-05M